

**DOCUMENT 00 90 00
ADDENDUM**

ADDENDUM NO. [3] Date: May 9, 2019

**RE: HOUSING AUTHORITY OF LA CROSSE
2018-19 CAPITAL IMPROVEMENT PROJECTS
1307 BADGER STREET
LA CROSSE, WI 54601
HSR PROJECT NO. 18065**

**FROM: HSR Associates, Inc
100 Milwaukee Street
La Crosse, WI 54603
(608) 784-1830**

To: Prospective Bidders

This addendum forms a part of the Contract Documents and modifies the original Bidding Documents dated April 2019. Acknowledge receipt of this Addendum in the space provided on the bid form. Failure to do so may subject the Bidder to disqualification.

This Addendum consists of [1] page, and [3] 30 x 42 drawing sheets.

CHANGES TO DRAWINGS:

1. Sheet E100 First Floor Electrical Plan (Stoffel Ct) 30 x 42 attached hereto
 - a. E.C to provide 120V power to new door operators.
2. Sheet E200 Electrical Floor Plan (Becker Plaza) 30 x 42 attached hereto
 - a. E.C to provide 120V power to new door operators.
 - b. Existing panel 'D' shall be designated as panel 'G'.
3. Sheet E300 Electrical Floor Plan (Solberg Hts) 30 x 42 attached hereto
 - a. E.C to provide 120V power to new door operators

END OF DOCUMENT 00 90 00



HSR ASSOCIATES INC.
100 MILWAUKEE STREET
LA CROSSE, WISCONSIN
PHONE: 608.784.1830
FAX: 608.782.5844
www.hsrassociates.com

Consultant:

Project Title: **HOUSING AUTHORITY OF THE CITY OF LA CROSSE
2018-19 CAPITAL IMPROVEMENT PROJECTS**
Project Location: **333 7TH STREET SOUTH
LA CROSSE, WISCONSIN**
Sheet Title: **FIRST FLOOR ELECTRICAL PLAN**

HSR Project Number:
18065

Project Date:
APRIL 2019

Drawn By:
MSV

Key Plan:

Revisions:		
No.	Description	Date
A01	ADDENDUM 1	5-7-19
A03	ADDENDUM 3	5-9-19

Graphic Scale:
0' 2' 4' 8' 12'

Last Update:
5/9/2019 3:52:36 PM

E100

SYMBOLS LIST:

- PANELBOARD, TERMINAL BOX
⬤ ELECTRICAL CONNECTION - SEE SCHEDULE
— LEG TO PANEL

GENERAL NOTES:

- A PROVIDE GROUND CONDUCTOR IN ALL CONDUITS.
B PROVIDE SEPARATE NEUTRAL CONDUCTORS FOR EACH RECEPTACLE BRANCH CIRCUIT. (NO COMMON NEUTRALS)
C THE WORD "PROVIDE" MEANS TO FURNISH AND INSTALL.
D EXISTING PUSH PLATES AND DOOR OPERATORS SHALL BE REMOVED BY ELECTRICAL CONTRACTOR.
E ELECTRICAL CONTRACTOR TO COORDINATE WITH DOOR HARDWARE SUPPLIER/INSTALLER.
F DOOR OPERATORS SHALL BE PROVIDED AND INSTALLED BY GENERAL CONTRACTOR. ELECTRICAL CONTRACTOR SHALL ENERGIZE DOOR OPERATORS.

KEY NOTES

- 1 PROVIDE CONCEALED CONDUIT RACEWAY UP TO ACCESSIBLE CEILING SPACE FOR ELECTRIC STRIKE. PROVIDE WIRING FROM DOOR OPERATOR. REUSE EXISTING BRANCH CIRCUIT.
2 REPLACE EXISTING KEY ACTUATOR WITH NEW KEY ACTUATOR. PROVIDE WIRING TO NEW DOOR OPERATOR. REUSE EXISTING BRANCH CIRCUIT.
3 PROVIDE 120V POWER TO NEW DOOR OPERATOR.
4 REPLACE EXISTING WIRELESS HANDICAP PUSH PLATE WITH NEW WIRELESS HANDICAP PUSH PLATE.
5 LOCATION OF EXISTING PANEL "K". FLUSH 100A, 208/120V, 3P-4W.

EQUIPMENT SCHEDULE

MARK NUMBER	EQUIPMENT DESCRIPTION	LOCATION ROOM NUMBER	RATING				WIRING		REMARK NUMBER
			FLA	H.P.	VOLT	PH.	SIZE CONDUCTORS	GRD	
PP	PUSH PLATE STATION	SEE PLANS							1
DO	DOOR OPERATOR	SEE PLANS			120	1	2 #12	#12	1
KA	KEY ACCESS ACTUATOR	SEE PLANS			120	1	2 #12	#12	1
ES	ELECTRIC STRIKE, 24VDC TRANSFORMER	SEE PLANS			120	1	2 #12	#12	

SEE REMARKS MCA - MINIMUM CIRCUIT AMPS

EQUIPMENT SCHEDULE REMARKS:

1. E.C. TO HARDWIRE TO DOOR OPERATOR AND KEY ACCESS ACTUATOR, HANDICAP PUSH PLATES SHALL BE WIRELESS. VERIFY WIRING REQUIREMENTS WITH MANUFACTURER.

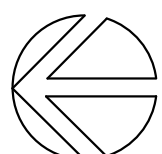
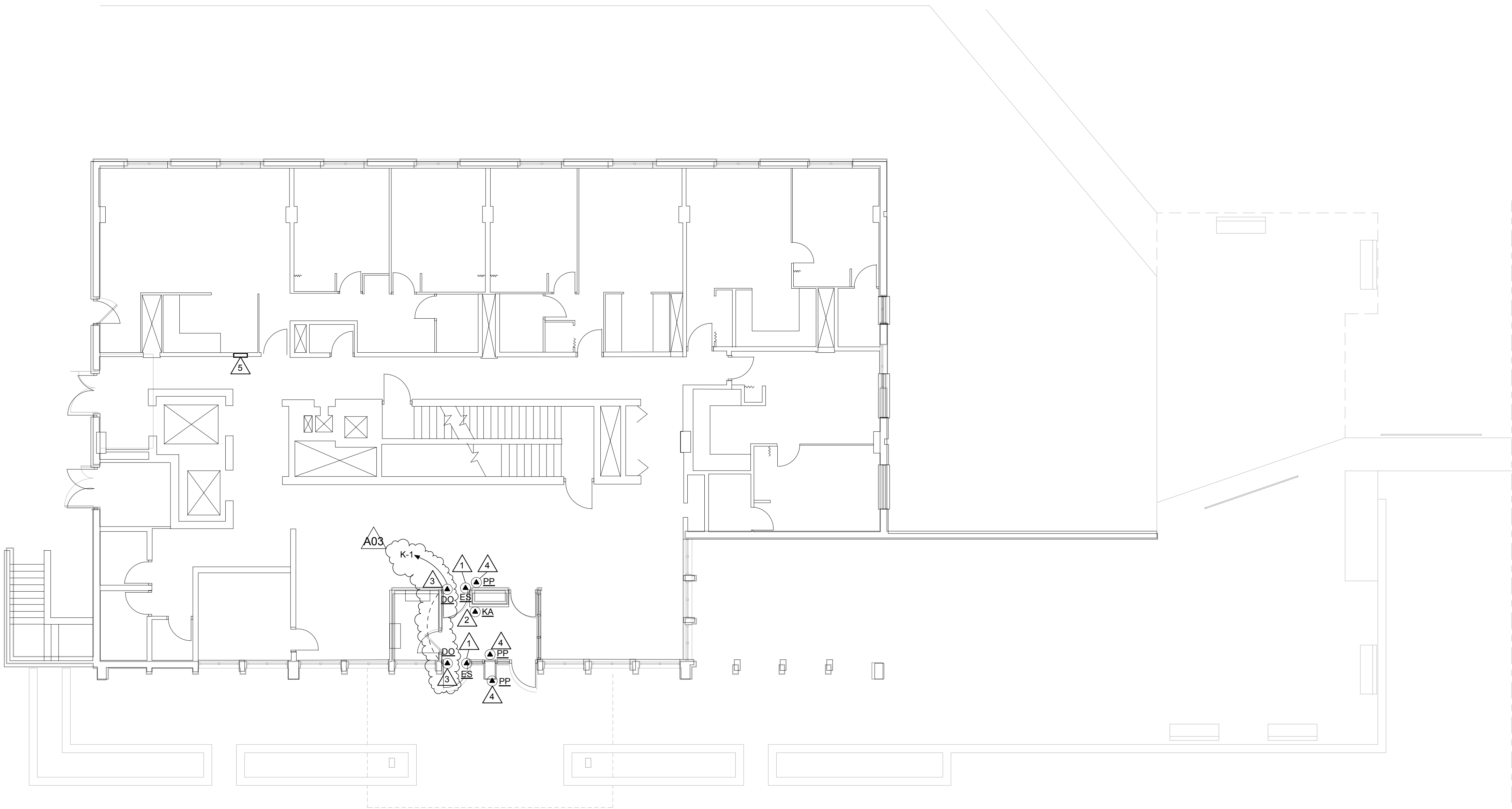
PANELBOARD SCHEDULE

PANEL TYPE	ROOM NO.	MFG. TYPE	MTG. FLUSH	SIZE SURFACE WIDTH DEPTH	ELECTRICAL SERVICE	MAINS				BRANCHES				SPACE	REMARK NUMBER
						AMP	LUGS	BREAKER	FEED LUGS	NO.	AMP	POLE	CIRCUIT NUMBERS		
EXISTING PANEL K	SEE PLAN	X	X	20" 5.75"	208/120 VOLT 3 PH, 4 WIRE	100	X			1	20	1	1		1

* SEE REMARKS

PANELBOARD SCHEDULE REMARKS:

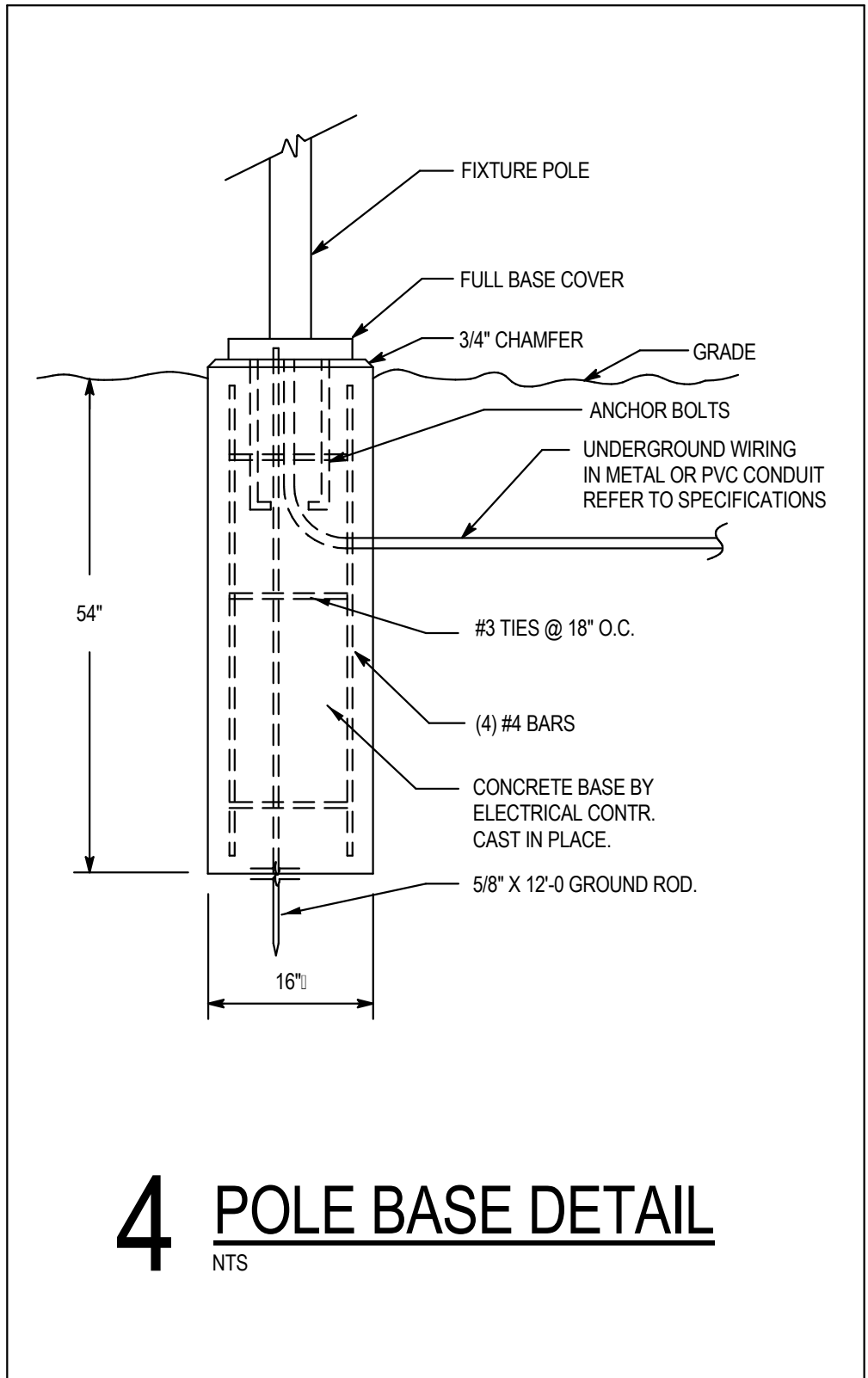
1. PROVIDE NEW CIRCUIT BREAKERS IN EXISTING PANELBOARD.



1

ELECTRICAL FLOOR PLAN

1/8" = 1'-0"



- KEY NOTES**
1. LOCATION OF EXISTING PANEL 'G' 400A, 208/120V, 3P-4W. PANEL FEEDS EXISTING SITE POLE LIGHTS, BUILDING WALL PAKS, AND CANOPY RECESSED CANS. **A03**
 2. LOCATION OF EXISTING LIGHTING CONTACTOR. EXISTING LIGHTING CONTACTOR CONTROLS EXISTING SITE LIGHT POLES, BUILDING WALL PAKS, AND CANOPY CAN LIGHTS.
 3. LOCATION OF EXISTING TIME CLOCK. EXISTING TIME CLOCK CONTROLS EXISTING SITE POLE LIGHTS, BUILDING WALL PAKS, AND CANOPY CANS. PHOTO 'ON' TIME CLOCK 'OFF'.
 4. REPLACE EXISTING GLOBE TYPE BUILDING MOUNTED LIGHT FIXTURE WITH NEW LED WALL PAK TYPE 'OA'. EXTEND EXISTING WIRING AND CONDUIT IF NECESSARY.
 5. REMOVE EXISTING SITE POLE/LIGHT, WIRING AND CONCRETE BASE. ALL CONDUIT TO REMAIN TO BE REUSED.
 6. PROVIDE NEW LED SITE POLE/LIGHT AND BASE AT SAME EXACT LOCATION OF REMOVED SITE POLE. SEE 4E200 FOR POLE BASE DETAIL.
 7. REUSE EXISTING CONDUIT AND BRANCH CIRCUIT. PROVIDE NEW WIRING, CONTROLLED BY EXISTING LIGHTING CONTACTOR AND TIME CLOCK.
 8. REPLACE EXISTING RECESSED CAN LIGHT WITH NEW LED RETROFIT RECESSED CAN LIGHT FIXTURE WITH TRIM. VERIFY TRIM SHALL COVER ANY GAPPING.
 9. REPLACE EXISTING FLUORESCENT SURFACE WRAPAROUND WITH NEW LED SURFACE WRAPAROUND FIXTURE TYPE 'A'. REUSE EXISTING BRANCH CIRCUIT AND SWITCH LEG.
 10. PROVIDE CONCEALED CONDUIT RACEWAY UP TO ACCESSIBLE CEILING SPACE FOR ELECTRIC STRIKE. PROVIDE WIRING FROM DOOR OPERATOR. REUSE EXISTING BRANCH CIRCUIT.
 11. REPLACE EXISTING KEY ACTUATOR WITH NEW KEY ACTUATOR. PROVIDE WIRING TO NEW DOOR OPERATOR. REUSE EXISTING BRANCH CIRCUIT.
 12. PROVIDE 120V TO NEW DOOR OPERATOR.
 13. REPLACE EXISTING WIRELESS HANDICAP PUSH PLATE WITH NEW WIRELESS HANDICAP PUSH PLATE.

- GENERAL NOTES:**
- A. PROVIDE GROUND CONDUCTOR IN ALL CONDUITS.
 - B. PROVIDE SEPARATE NEUTRAL CONDUCTORS FOR EACH RECEPTACLE BRANCH CIRCUIT. (NO COMMON NEUTRALS.)
 - C. THE WORD "PROVIDE" MEANS TO FURNISH AND INSTALL.
 - D. NOTE THAT ALL NEW LIGHTING FIXTURES ARE TO REPLACE EXISTING ONES AT SAME EXACT LOCATION. SITE POLES, EXTERIOR WALL PAKS, AND INTERIOR SURFACE FIXTURES.
 - E. REMOVE ALL ELECTRICAL SITE POLES AND BASES SHOWN AND ALSO REMOVE ALL ASSOCIATED WIRING BACK TO PANEL.
 - F. ELECTRICAL CONTRACTOR TO REUSE ALL EXISTING SITE POLE UNDERGROUND CONDUIT RUNS.
 - G. ELECTRICAL CONTRACTOR TO EXTEND CONDUIT WHERE NECESSARY TO ACCOMMODATE NEW LIGHT POLES IN EXACT LOCATION OF REMOVED LIGHT POLES.
 - H. CONTROL OF NEW LIGHT POLES SHALL BE ACCOMPLISHED BY EXISTING LIGHTING CONTACTOR AND TIME CLOCK. REUSE EXISTING BRANCH CIRCUIT IN EXISTING PANEL 'D'.
 - I. CONTROL OF NEW BUILDING WALL PAKS AND CANOPY LIGHTS SHALL BE ACCOMPLISHED BY EXISTING LIGHTING CONTACTOR AND TIME CLOCK. REUSE EXISTING BRANCH CIRCUIT IN EXISTING PANEL 'D'.
 - J. NOTE (75) APARTMENT UNITS IN TOTAL. ONE AND TWO BEDROOM APARTMENT UNITS HAVE THE SAME LIGHT FIXTURE ORIENTATION.
 - K. EXISTING PUSH PLATES AND DOOR OPERATORS SHALL BE REMOVED BY ELECTRICAL CONTRACTOR.
 - L. ELECTRICAL CONTRACTOR TO COORDINATE WITH DOOR HARDWARE SUPPLIER / INSTALLER.
 - M. DOOR OPERATORS SHALL BE PROVIDED AND INSTALLED BY GENERAL CONTRACTOR. ELECTRICAL CONTRACTOR SHALL ENERGIZE DOOR OPERATORS.
 - N. GENERAL CONTRACTOR SHALL REMOVE POLE BASE AFTER POLE/LIGHT IS REMOVED.
 - O. GENERAL CONTRACTOR SHALL PROVIDE CONCRETE FOR NEW POLE BASES.
 - P. ELECTRICAL CONTRACTOR IS RESPONSIBLE FOR REMOVAL AND DISPOSAL OF ALL DEMOED SITE POLES, WALL PAKS, AND SURFACE WRAPAROUNDS.

A03

PANELBOARD SCHEDULE																			
PANEL TYPE #	ROOM NO.	MFG. TYPE	MTG	SIZE		ELECTRICAL SERVICE	MAINS					BRANCHES					SPACE	REMARK NUMBER	
				FLUSH	WIDTH		DEPTH	AMP	LUSS	BREAKER	SWITCH	FEED THRU LUSS	NO.	AMP	POLE	CIRCUIT NUMBERS			
EXISTING PANEL G	SEE PLAN		X	20"	5.75"	208Y/120 VOLT 3 PH, 4 WIRE	400	X					1	20	1	1			1
* SEE REMARKS																			
PANELBOARD SCHEDULE REMARKS:																			
1. PROVIDE NEW CIRCUIT BREAKERS IN EXISTING PANELBOARD.																			

LIGHTING FIXTURE SCHEDULE

TYPE	MANUFACTURE	CATALOG NUMBER	DESCRIPTION	VOLT	MOUNTING **					LAMPS	REMARK NUMBER
					F	S	P	O	NO.	WATT	
A	LITHONIA	SBL-4-400LM-80CRI-40K-MIN10-GTZ-MVOLT	4'-0" LED SURFACE WRAPAROUND	MVOLT	+				32	LED INCLUDED	1
OA	LUMARK	XTOR2B	LED WALL PAK	120	+				18	LED INCLUDED	2
OB	LITHONIA	MRP-LED-42C-530-50K-SR3-MVOLT-MRP120-DMG-PER-DOB-DL	LED POST TOP, TYPE 3	MVOLT				+	75	LED INCLUDED	3
OC	LITHONIA	MRP-LED-42C-700-50K-SR3-MVOLT-RPA-AS20-290-PER-DOB-DL	LED TWIN HEAD, TYPE 3, 2@90	MVOLT				+	98	LED INCLUDED	4
OD	A LINE	ALR8-34-40-W-HC-CH	LED RETROFIT RECESSED CAN	120	+				34	LED INCLUDED	5

* SEE REMARKS
** F: FLUSH MOUNT; S: SURFACE MOUNT; P: PENDANT HUNG; O: OTHER-SEE REMARKS IN REGARDS TO FIXTURE MOUNTING.

LIGHTING FIXTURE SCHEDULE REMARKS:

1. 4'-0" SQUARE BASKET LED WRAPAROUND, 4000°K, 4000 LUMENS, 0-10V DIMMING.
2. "CRISTORLEET" SURFACE WALL PAK, STANDARD CARSON BRONZE FINISH, 5000°K.
3. LUMINARE: 42 LED, 530mA DRIVER, 5000°K, 120V THRU 277V, TYPE 3 DISTRIBUTION, DARK BRONZE FINISH, NEMA TWIST-LOCK RECEPTACLE ONLY, 6881 LUMENS. POLE: 1 LED LUMINARE FLUSH MOUNT, 4" ROUND SQUARE STRAIGHT STEEL, 8'-0" POLE, 80 MPH WINDLOAD, VIBRATION DAMPENER, POLE FINISH TO MATCH LUMINARE. PROVIDE CONCRETE POLE BASE WITH ANCHOR BOLTS AND BASE COVER. REFER TO POLE BASE DETAIL 4E200.
4. LUMINARE: 42 LED, 700mA DRIVER, 5000°K, 120V THRU 277V, TYPE 3 DISTRIBUTION, DARK BRONZE FINISH, NEMA TWIST-LOCK RECEPTACLE ONLY, 8533 LUMENS. POLE: 2 LED LUMINARES @ 90 DEGREES FLUSH MOUNT, 4" ROUND SQUARE STRAIGHT STEEL, 20'-0" POLE, 80 MPH WINDLOAD, VIBRATION DAMPENER, POLE FINISH TO MATCH LUMINARE. PROVIDE CONCRETE POLE BASE WITH ANCHOR BOLTS AND BASE COVER. REFER TO POLE BASE DETAIL 4E200.
5. 8" QUICK CHANGE LED RETROFIT KIT, 2800 LUMENS, 4000°K, WIDE BEAM ANGLE 17° SEMI-SPECULAR REFLECTOR, CHROME TRIM RING.

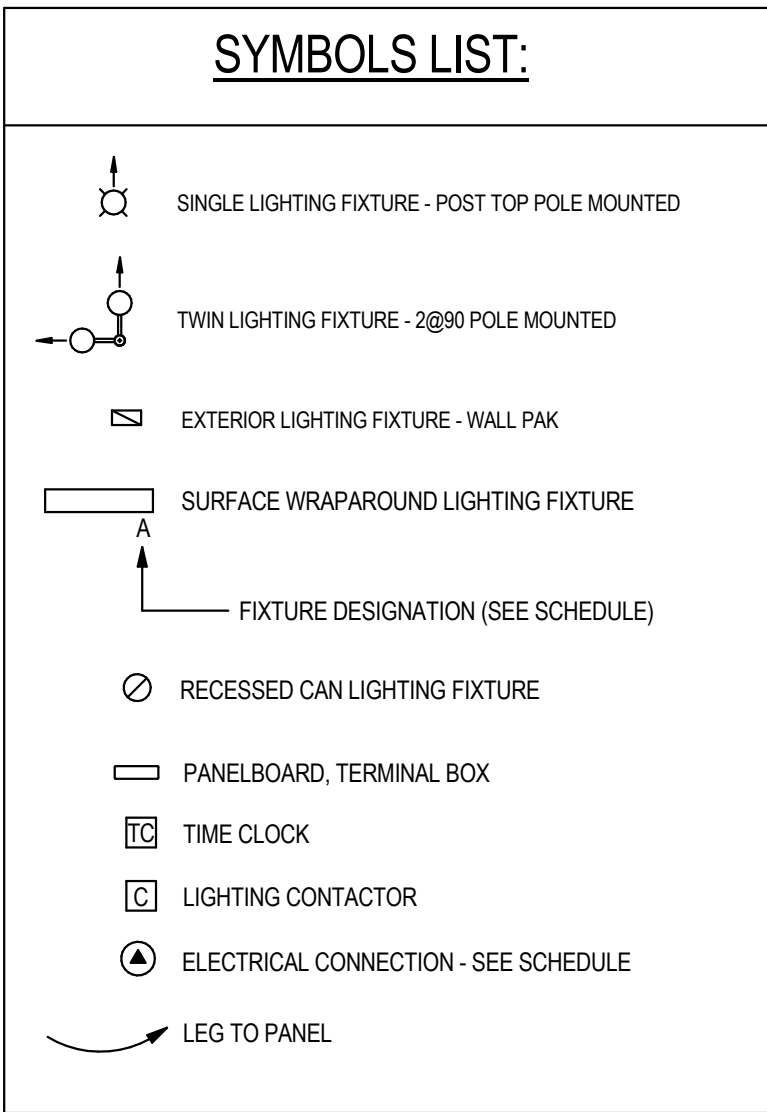
EQUIPMENT SCHEDULE

MARK NUMBER	EQUIPMENT DESCRIPTION	LOCATION ROOM NUMBER	RATING				WIRING		REMARK NUMBER
			FLA	H.P.	VOLT	PH.	CONDUCTORS	GRD	
PP	PUSH PLATE STATION	SEE PLANS							1
DO	DOOR OPERATOR	SEE PLANS			120	1	2 #12	#12	1
KA	KEY ACCESS ACTUATOR	SEE PLANS			120	1	2 #12	#12	1
ES	ELECTRIC STRIKE, 24VDC TRANSFORMER	SEE PLANS			120	1	2 #12	#12	

SEE REMARKS: MCA - MINIMUM CIRCUIT AMPS

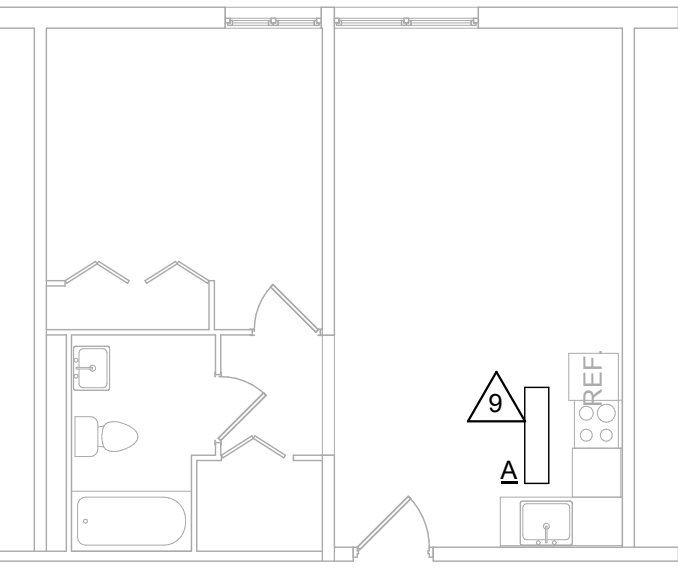
EQUIPMENT SCHEDULE REMARKS:

1. E.C. TO HARDWARE TO DOOR OPERATOR AND KEY ACCESS ACTUATOR. HANDICAP PUSH PLATES SHALL BE WIRELESS. VERIFY WIRING REQUIREMENTS WITH MANUFACTURER.



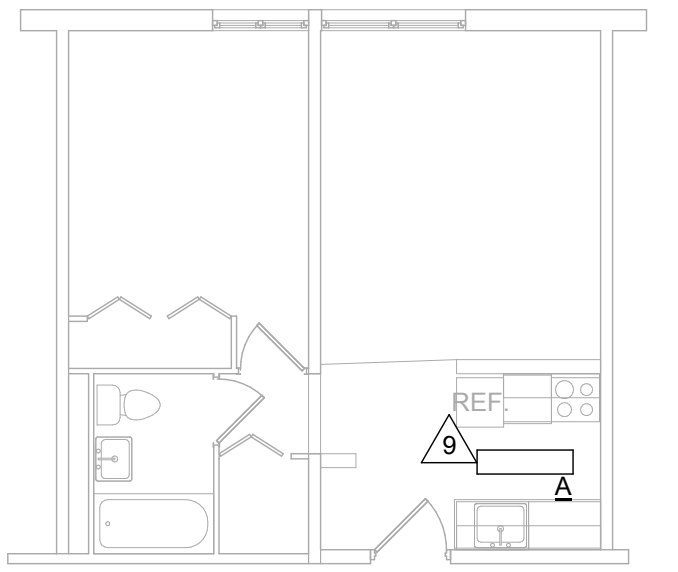
3 TYPICAL ADA BEDROOM UNIT PLAN

1/8" = 1'-0"



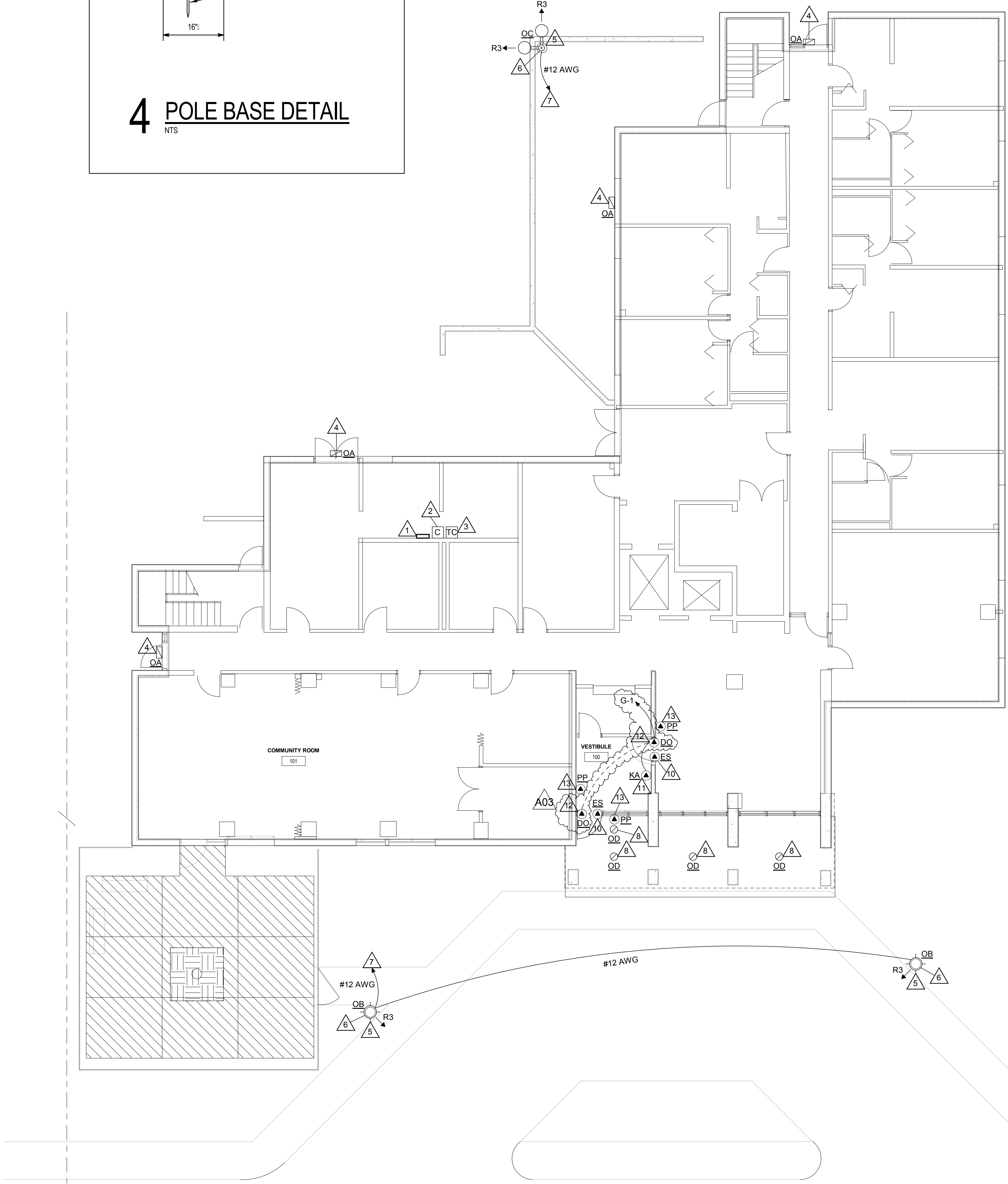
2 TYPICAL ONE BEDROOM UNIT PLAN

1/8" = 1'-0"



1 ELECTRICAL FLOOR PLAN

1/8" = 1'-0"



HSR ASSOCIATES INC.
100 MILWAUKEE STREET
LA CROSSE, WISCONSIN
PHONE: 608.784.1830
FAX: 608.782.5844

WEB SITE: www.hsrassociates.com

Consultant:

HOUSING AUTHORITY OF THE CITY OF LA CROSSE
2018-19 CAPITAL IMPROVEMENT PROJECTS

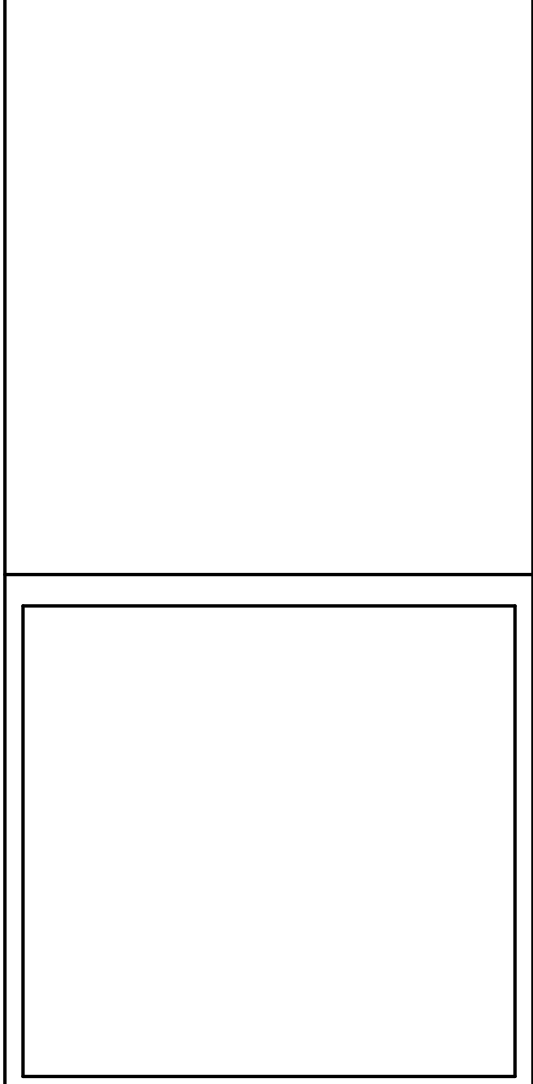
Project Title:

HSR Project Number:
18065

Project Date:
APRIL 2019

Drawn By:
MSV

Key Plan:



Revisions:

No.	Description	Date
A01	ADDENDUM 1	5-7-19
A03	ADDENDUM 3	5-9-19

Graphic Scale:
0' 2' 4' 8' 12'

Last Update:
5/9/2019 3:46:25 PM

E200



HSR ASSOCIATES INC.
100 MILWAUKEE STREET
LA CROSSE, WISCONSIN
PHONE: 608.784.1830
FAX: 608.782.5844

WEB SITE: www.hsrassociates.com
Consultant:

Project Title: HOUSING AUTHORITY OF THE CITY OF LACROSSE
2018-19 CAPITAL IMPROVEMENT PROJECTS

Project Location: 215 6TH STREET SOUTH
LA CROSSE, WI

Sheet Title: ELECTRICAL FLOOR PLAN

HSR Project Number: 18065

Project Date: APRIL 2019

Drawn By: MSV

Key Plan:

No.	Description	Date
A03	ADDENDUM 3	5-9-19

Graphic Scale:
0' 2' 4' 8' 12'

Last Update:
5/9/2019 3:50:52 PM

E300

EQUIPMENT SCHEDULE									
MARK NUMBER	EQUIPMENT DESCRIPTION	LOCATION ROOM NUMBER	RATING			WIRING			REMARK NUMBER
			FLA	H.P.	VOLT	PH.	CONDUCTORS	GRD.	
PP	PUSH PLATE STATION	SEE PLANS							1
DO	DOOR OPERATOR	SEE PLANS			120	1	2 #12	#12	1
KA	KEY ACCESS ACTUATOR	SEE PLANS			120	1	2 #12	#12	1
ES	ELECTRIC STRIKE, 24VDC TRANSFORMER	SEE PLANS			120	1	2 #12	#12	1
SEE REMARKS MCA - MINIMUM CIRCUIT AMPS									
EQUIPMENT SCHEDULE REMARKS: 1. E.C. TO HARDWARE TO DOOR OPERATOR AND KEY ACCESS ACTUATOR, HANDICAP PUSH PLATES SHALL BE WIRELESS. VERIFY WIRING REQUIREMENTS WITH MANUFACTURER.									

SYMBOLS LIST:

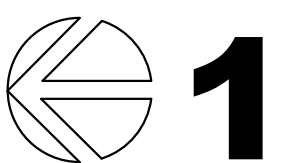
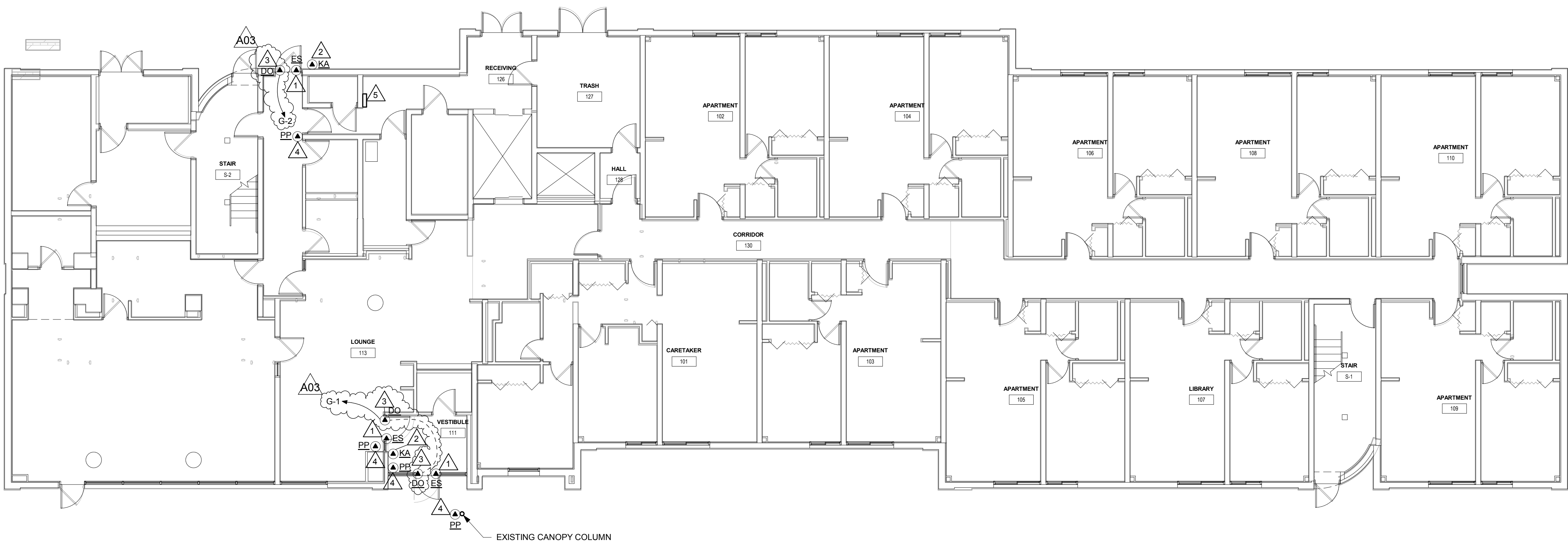
- PANELBOARD, TERMINAL BOX
ELECTRICAL CONNECTION - SEE SCHEDULE
LEG TO PANEL

GENERAL NOTES POWER:									
A. PROVIDE GROUND CONDUCTOR IN ALL CONDUITS.									
B. PROVIDE SEPARATE NEUTRAL CONDUCTORS FOR EACH RECEPTACLE BRANCH CIRCUIT. (NO COMMON NEUTRALS)									
C. THE WORD "PROVIDE" MEANS TO FURNISH AND INSTALL.									
D. EXISTING PUSH PLATES AND DOOR OPERATORS SHALL BE REMOVED BY ELECTRICAL CONTRACTOR.									
E. E.C. TO COORDINATE WITH DOOR HARDWARE SUPPLIER/INSTALLER.									
F. DOOR OPERATORS SHALL BE PROVIDED AND INSTALLED BY GENERAL CONTRACTOR. ELECTRICAL CONTRACTOR SHALL ENERGIZE DOOR OPERATORS.									

KEY NOTES

1. PROVIDE CONCEALED CONDUIT RACEWAY UP TO ACCESSIBLE CEILING SPACE FOR ELECTRIC STRIKE. PROVIDE WIRING FROM DOOR OPERATOR. REUSE EXISTING BRANCH CIRCUIT.
2. REPLACE EXISTING KEY ACTUATOR WITH NEW KEY ACTUATOR. PROVIDE WIRING TO NEW DOOR OPERATOR. REUSE EXISTING BRANCH CIRCUIT.
3. PROVIDE 120V TO NEW DOOR OPERATOR.
4. REPLACE EXISTING WIRELESS HANDICAP PUSH PLATE WITH NEW WIRELESS HANDICAP PUSH PLATE.
5. LOCATION OF EXISTING PANEL 'G', SURFACE 225A, 208/120V, 3P-4W.

PANELBOARD SCHEDULE														
PANEL TYPE	ROOM NO.	MFR TYPE	FLOOR SURFACE	MTG. SIZE	ELECTRICAL SERVICE	AMP.	LUGS	CIRCUIT BREAKER	FEED THRU LUGS	NO.	AMP.	POLE	CIRCUIT NUMBERS	SPACE
EXISTING PANEL 'G'	SEE PLAN		X	20" 5.75"	208Y/120VOLT 3 PH, 4 WIRE	225	X			2	20	1	1 & 2	1
* SEE REMARKS														
PANELBOARD SCHEDULE REMARKS: 1. PROVIDE NEW CIRCUIT BREAKERS IN EXISTING PANELBOARD.														



ELECTRICAL FLOOR PLAN

1/8" = 1'-0"